



**BALABAN DEVE**  
—  
**KIÇIK QIRMISQA**



**BALABAN SIĞIN**  
—  
**KIÇIK SIÇAN**



**UZUN YILAN**  
—  
**QISQA SIVALÇAN**



**UZUN ANTER**  
—  
**QISQA KÖLMEK**



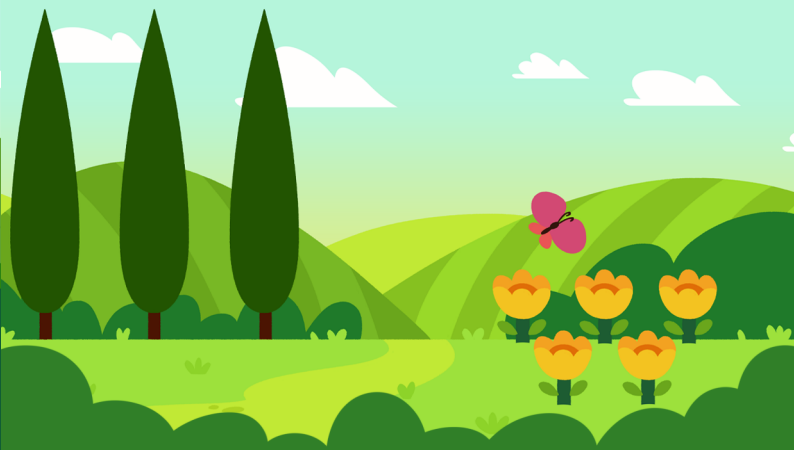
ESKİ AHIR  
—  
YAÑI EV



ESKİ ARABA  
—  
YAÑI MAŞINA



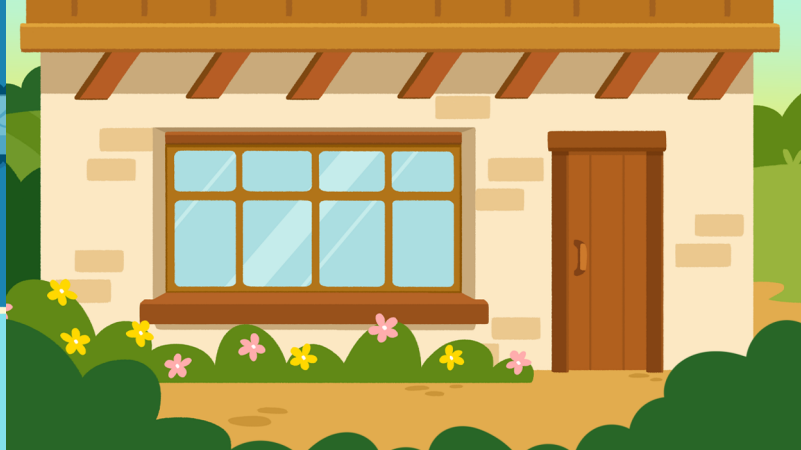
YÜKSEK MİNARE  
—  
ALÇAQ ŞADIRVAN



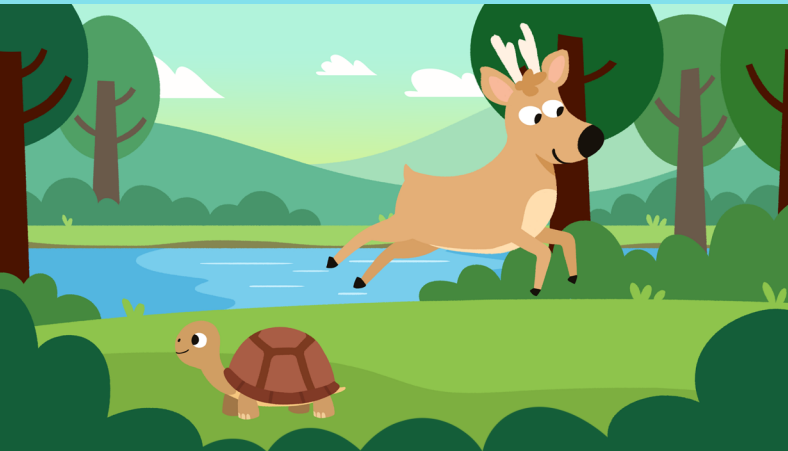
YÜKSEK SERVİLER  
—  
ALÇAQ LÂLELER



**KEÑ DOLAP**  
—  
**TAR RAF**



**KEÑ PENCERE**  
—  
**TAR QAPI**



**TEZ ÇAPQAN QARACA**  
—  
**YAVAŞ YÜRGEN**  
**QAPLIBAQA**



**OĞLAN TEZ YÜRE**  
—  
**QARTBABA YAVAŞ YÜRE**